



MATERIALS

Bernat® Blanket™ (10 oz/300 g; 220 yds/201 m)

Contrast A Coal (10040) **1 ball or 175 yds/160 m**

Contrast B Vintage White (10006) **1 ball or 165 yds/151 m**

Contrast C Malachite (10802) **1 ball or 110 yds/101 m**

Size U.S. 10½ (6.5 mm) knitting needles **or size needed to obtain gauge.** 24" [61 cm] square pillow form. 1 button.

ABBREVIATIONS

Approx = Approximate(ly)

Cont = Continue(ity)

RS = Right side

Pat = Pattern

Rep = Repeat

Sl1Pwyib = Slip next stitch purlwise, with yarn at back of work

Sl1Pwyif = Slip next stitch purlwise, with yarn at front of work

St(s) = Stitch(es)

WS = Wrong side



KNIT | SKILL LEVEL: **INTERMEDIATE**

MEASUREMENT

Approx 24" [61 cm] square.

GAUGE

10 sts and 12 rows = 4" [10 cm] in Chart pat.

INSTRUCTIONS

FRONT

Note: Work first rep of 40 rows of Chart with A as Color 1 and B as Color 2.

Work second rep of 40 rows of Chart with C as Color 1 and B as Color 2.

Work third rep of 40 rows of Chart with A as Color 1 and B as Color 2.

**With A, cast on 54 sts.

Foundation row: (WS). With A, purl.

Proceed as follows:

Chart is shown on page 2.

1st row: (RS). With Color 2, *reading row from right to left*, knit 1st row of chart, slipping contrast color sts as Sl1Pwyib.

2nd row: (WS). With Color 2, *reading row from left to right*, purl 2nd row of chart, noting working color is same color as previous RS row and slip contrast color sts as Sl1Pwyif.

3rd row: (RS). With Color 1, *reading row from right to left*, knit 3rd row of chart, slipping contrast color sts as Sl1Pwyib.

4th row: (WS). With Color 1, *reading row from left to right*, purl 4th row of chart, noting working color is the same color as previous RS row and slip contrast color sts as Sl1Pwyif.

First 4 rows of Chart are complete.

Cont working Chart until 40 rows of chart are complete, having A as Color 1 and B as Color 2. Break A at end of Chart.

Rep 40 rows of Chart, having C as Color 1 and B as Color 2. Break C at end of Chart.**

Rep 40 rows of Chart, having A as Color 1 and B as Color 2.

Next row: (RS). With A, knit. Cast off purlwise.

LOWER BACK

Work from ** to ** as given for Front. **Do not** break C.

Next 2 rows: With C, knit.

Cast off knitwise.

UPPER BACK

With C, cast on 54 sts.

1st and 2nd rows: Knit.

3rd row: (WS). Purl.

Work 21st to 40th rows of Chart, having C as Color 1 and B as Color 2. Break C at end of Chart.

Rep 1st to 40 rows of Chart, having A as Color 1 and B as Color 2. Break B.

Next row: (RS). With A, knit.

Cast off purlwise.

BUTTON LOOP

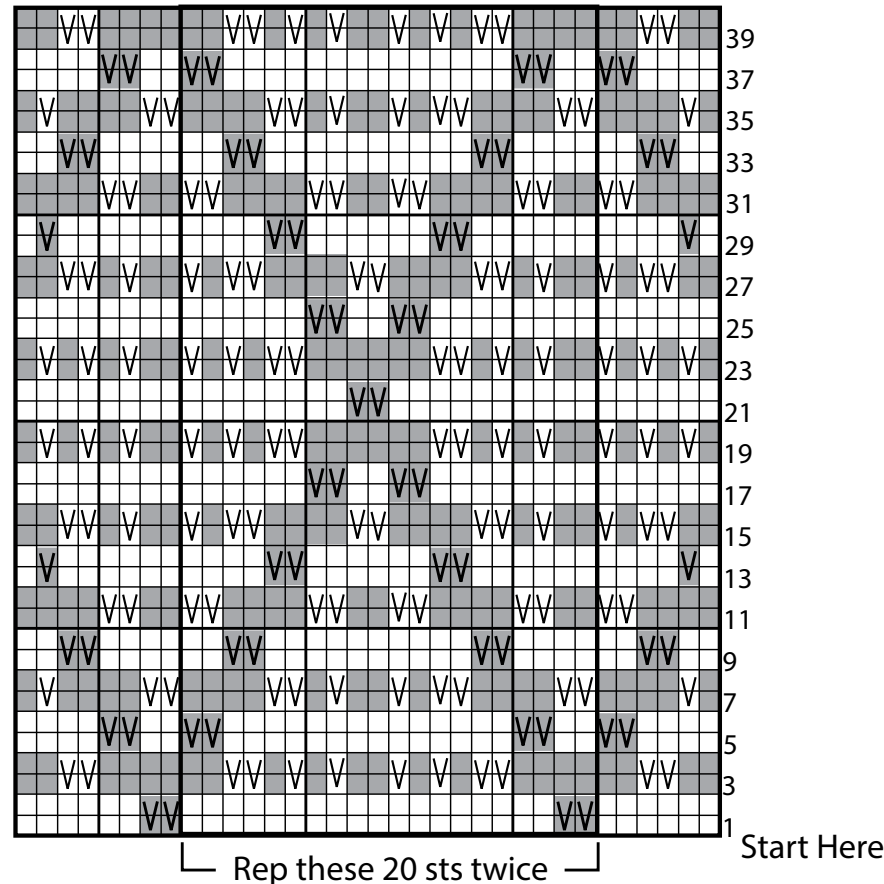
With A, cast on 15 sts. Cast off.

FINISHING

Pin pieces to measurements. Cover with a damp cloth, leaving cloth to dry. Sew Upper Back to Front.

Sew Lower Back to Front, overlapping inside Upper Back.

Fold Button loop in half and sew to center of Upper Back. Sew button to correspond to button loop.



Key

■ = With Color 1, knit on RS rows. Purl on WS rows.

□ = With Color 2, knit on RS rows. Purl on WS rows.

⌋ = With Color 1, S1Pwyib on RS rows. S1Pwyif on WS rows

⌋ = With Color 2, S1Pwyib on RS rows. S1Pwyif on WS rows